

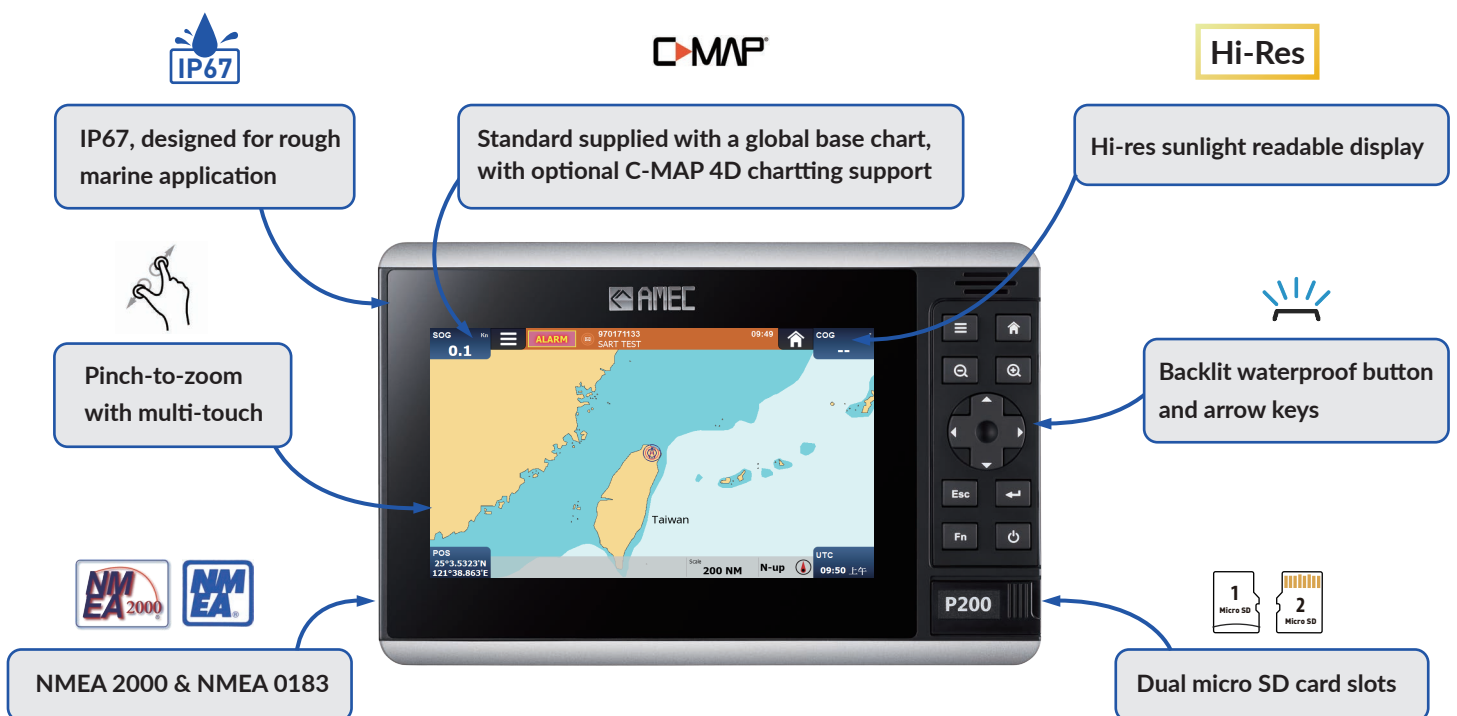


GPS Antenna Unit
(Option)
Model GA-22

AIS Class B with Display
Model P200

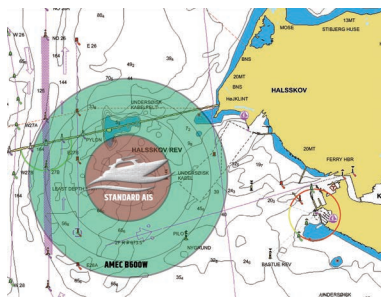


The Widelinek P200 is a globally certified AIS Class B with Display. The application running on P200 is the next milestone of AMEC’s software technology. It features a powerful charting engine with intuitive user interface and advanced navigation functions for enhanced safety and eased voyage. P200’s hardware with its IP67 waterproof and ergonomic interface ensures a reliable operation in rough marine environment.



Superior Performance Guaranteed

P200 series' 5W transmission power enables bigger transmission range than the conventional 2W AIS class B. It's higher reporting rate and professional grade time division management make P200 an overall more advanced product compared to AIS CSTDMA class B.



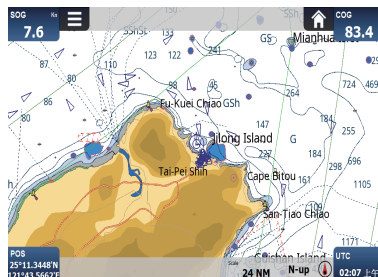
P200 Tx range comparison with 2W AIS class B



Powerful 72-channel high speed GNSS receiver supporting GPS and GLONASS

See and to Be Seen

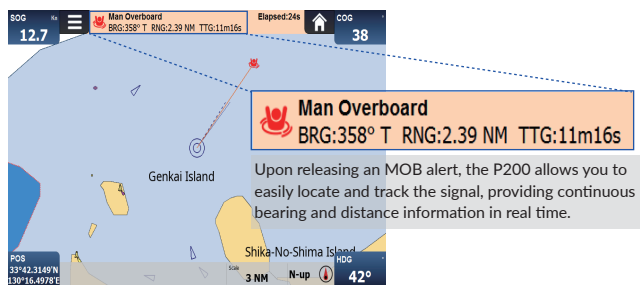
Chart view and plot view give an enhanced situational awareness at sea with an unlimited number of AIS target display.



AIS targets on C-MAP 4D chart

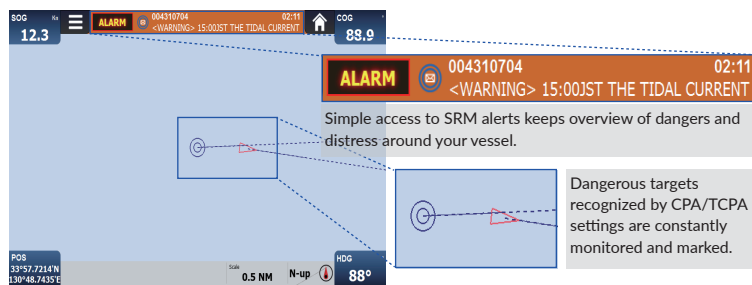


AIS targets on plot view



AIS MOB/SART alert easy to track

Upon releasing an MOB alert, the P200 allows you to easily locate and track the signal, providing continuous bearing and distance information in real time.





Keep your eyes on dangerous targets

Simple access to SRM alerts keeps overview of dangers and distress around your vessel.

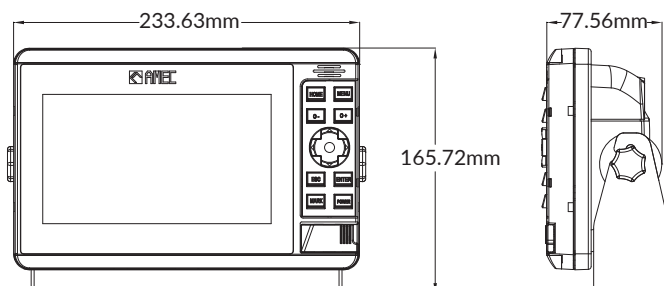
Dangerous targets recognized by CPA/TCPA settings are constantly monitored and marked.



Technical Specifications

AIS Class B with Display		
	P200-SO	P200-CS
		
STANDARDS		
	IEC 62287-2 Ed.2: 2017	IEC 62287-1 Ed.3:2017
	IEC 61108-1 Ed.2: 2003 IEC 60945 Ed.4: 2002 ITU-R M.1371-5, 2014	
VHF TRANSCEIVER		
Frequency Range	156.025 MHz ~ 162.025 MHz	
Access Scheme	SOTDMA	CSTDMA
Tx Output Power	1W or 5W (30 dBm or 37 dBm +/- 1.5 dB)	2W (33 dBm +/- 1.5 dB)
Receive Sensitivity	better than -107 dBm @ 20% PER	
GNSS RECEIVER (integrated)		
Receiving Channels	72 channels	50 channels
Position Accuracy	IEC 61108-1 compliant	IEC 61108-1 compliant
Time to First Fix	< 60s	< 60s
LED DISPLAY		
Display Size	7 inches	
Screen Brightness	850 nits	
Display Resolution	1024x600	
CONNECTION INTERFACE		
VHF Antenna Connector	SO-239 (female)	
GPS Antenna Connector	TNC (female)	
NMEA 0183 Connector	12 pins (with 8 wires connecting to external device)	
NMEA 2000 Connector	5 pins, standard connector LEN=1	
Ethernet Port (cable w/ RJ45)	Optional	Optional
Wi-Fi Connectivity	Optional	Optional
ENVIRONMENTAL		
Operating Temperature	-15 C to +55 C	
Waterproof Rating	IP67 with SD card door closed	
POWER SUPPLY		
Power Input / Current (Max)	12-24 VDC / 1.1-0.7A max	12-24 VDC / 2.3-1.9A max

DIMENSION DRAWINGS



Alltek Marine Electronics Corporation

www.alltekmarine.com

14F-2, No. 237, Sec. 1, Datong Rd., Xizhi Dist.,
New Taipei City, 22161, Taiwan

Tel: +886 2 8691 8568 Fax: +886 2 8691 9569