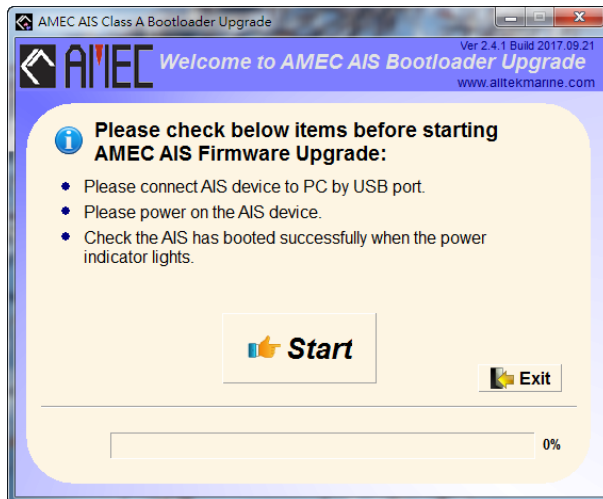


AMEC AIS Upgrade Guide

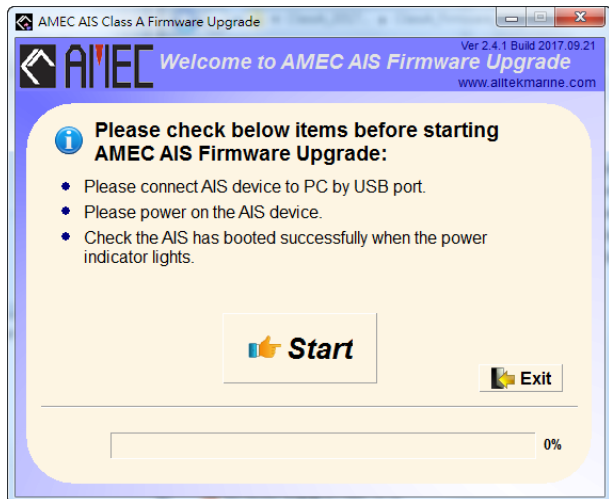
The document demonstrates how to update with AMEC AIS Class A. There are two parts for this document, bootloader and firmware.

Please run the bootloader upgrade program firstly.

At the meantime, Appendix A shows the operation to verify bootloader version at CAMINO-701.



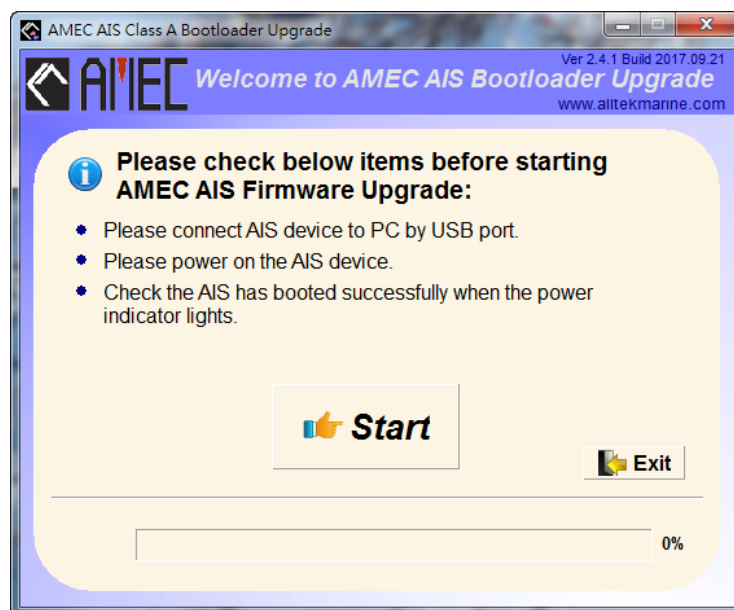
Bootloader upgrade program



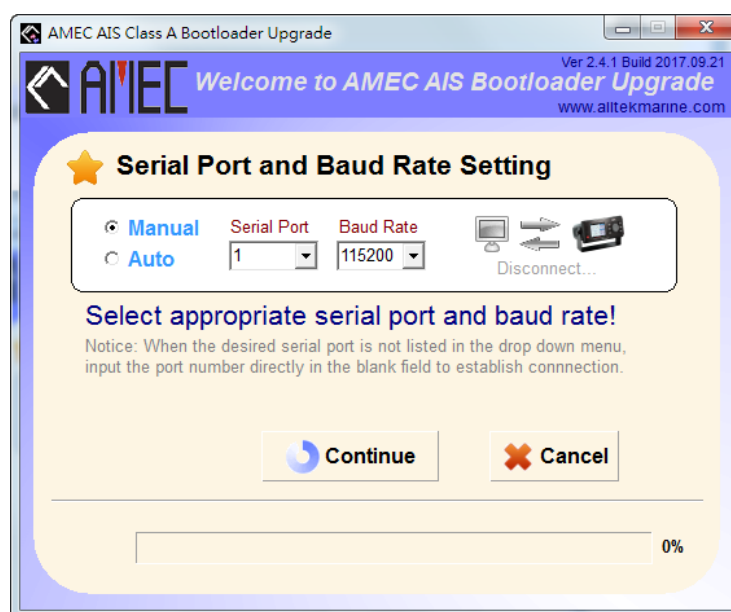
Firmware upgrade program

Bootloader upgrade procedure:

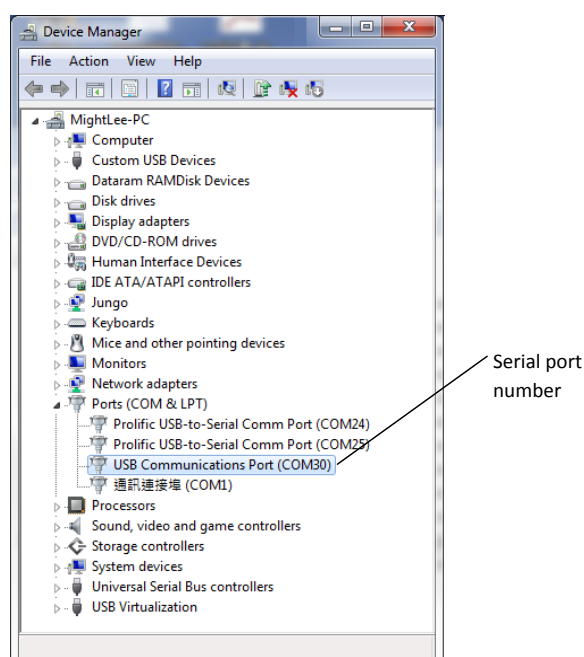
1. Connect your AIS device to USB port on your PC/Laptop before the Bootloader Upgrade process starts. After AIS device is connected, click on the "ClassA_Bootlaoder_Upgrade" file, and a main window will pop up as shown below. Click on "Start" to begin the procedure.



2. There are 2 options to connect the software with your AIS device: manually or automatically.

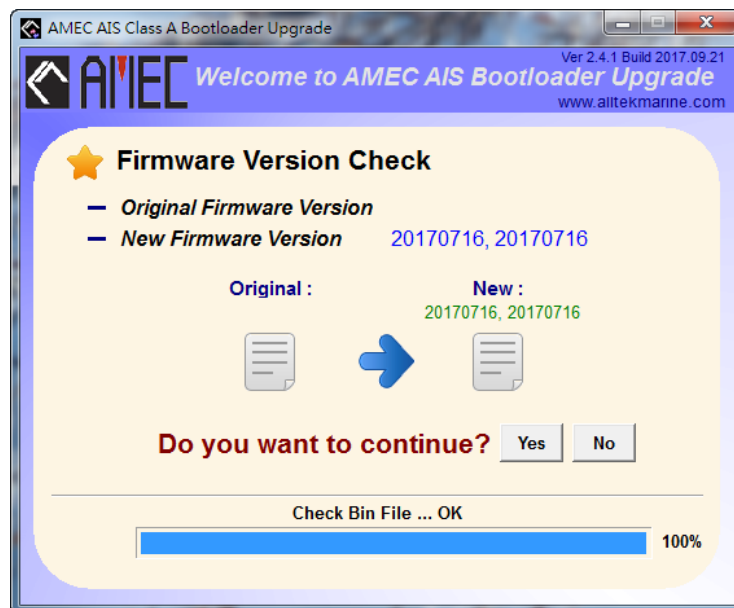


- **Auto:** The system will scan all connected ports and their available baud rates and establish connection automatically.
- **Manual:** Setting Configure baud rate and selecting port manually. The default baud rate is 115200. Open “Device Manager” in your Windows system to determine the serial port which was created by the device. For the example below, it’s COM30.

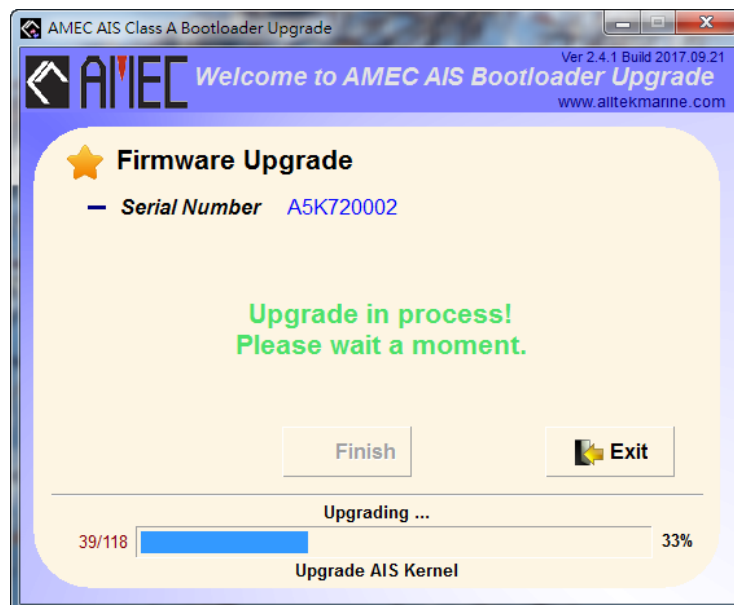


After selecting the connection method, click on “Continue” button.

3. Before bootloader upgrade starts, confirm the bootloader version at first as the screenshot demonstrated. Click “Yes” to continue.



4. After clicking “Yes”, a bar at the bottom of the window will appear to indicate the upgrade progress as shown below.



5. After the upgrade process is completed, restart (power cycle) the AIS device.

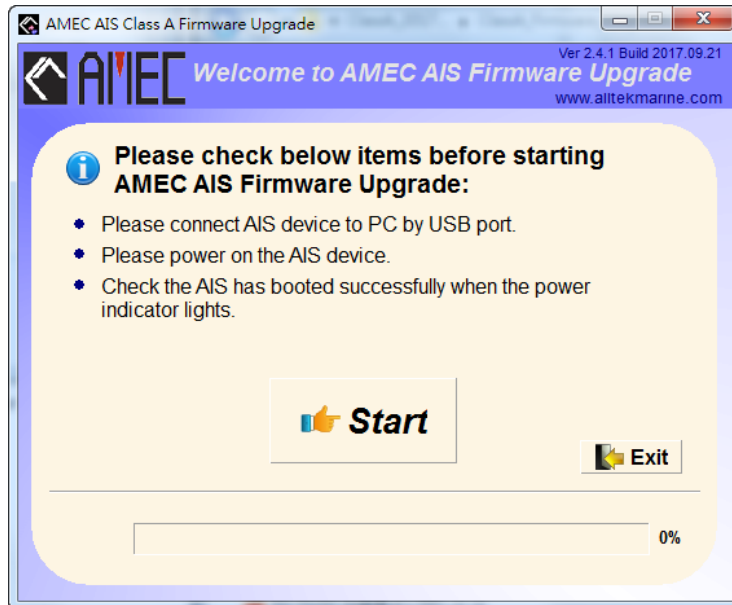


NOTE1: During the upgrade process, if the system fails, please restart the Bootloader Upgrade program. If the problem persists, please contact AMEC for troubleshooting.

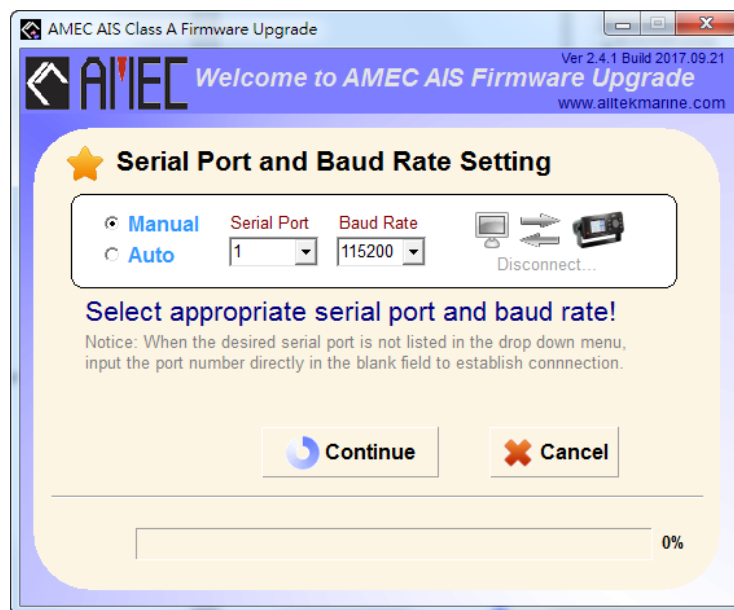
NOTE2: After the bootloader upgrade is finished, the AIS device will return to the default setting.

Firmware upgrade procedure:

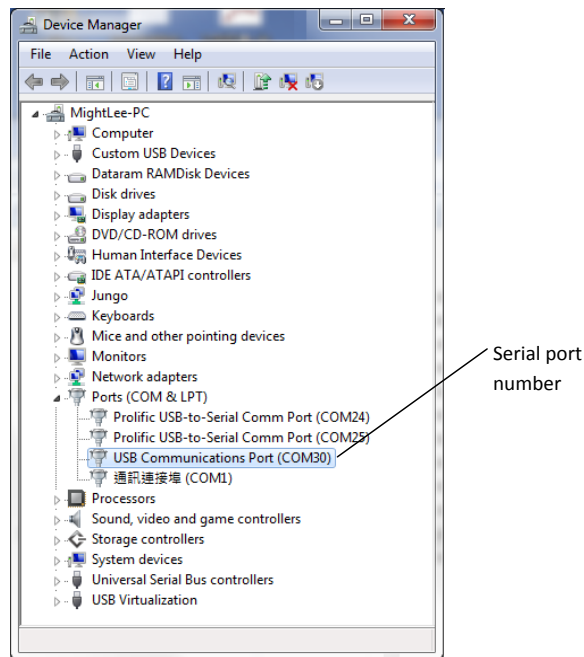
1. Connect your AIS device to USB port on your PC/Laptop before the firmware upgrade process starts. After AIS device is connected, click on the "ClassA_Firmware_Upgrade" file, and a main window will pop up as shown below. Click on "Start" to begin the procedure.



2. There are 2 options to connect the software with your AIS device: manually or automatically.

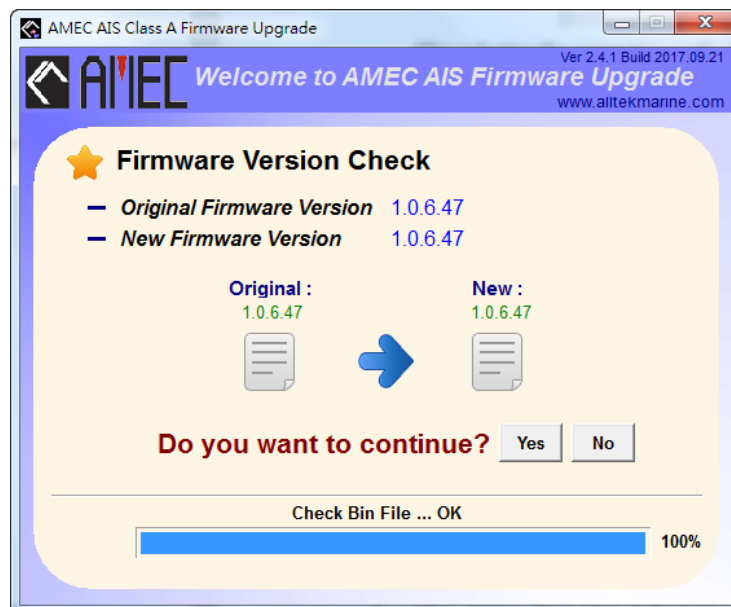


- **Auto:** The system will scan all connected ports and their available baud rates and establish connection automatically.
- **Manual:** Setting Configure baud rate and selecting port manually. The default baud rate is 115200. Open "Device Manager" in your Windows system to determine the serial port which was created by the device. For the example below, it's COM30.

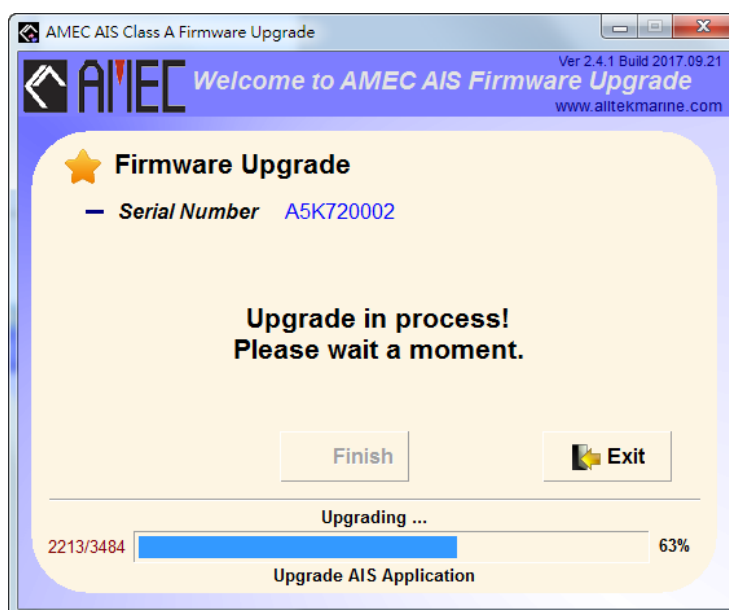


After selecting the connection method, click on “Continue” button.

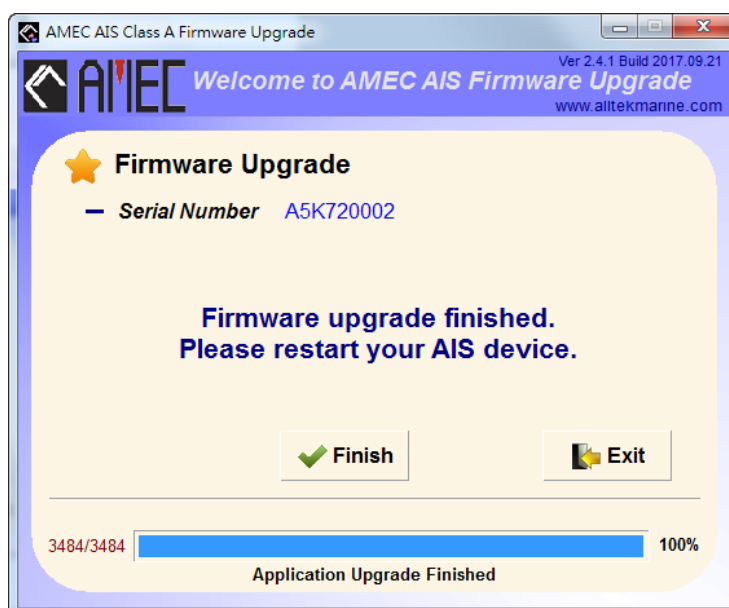
3. Before firmware upgrade starts, confirm the firmware version at first as the screenshot demonstrated. Click “Yes” to continue.



4. After clicking “Yes”, a bar at the bottom of the window will appear to indicate the upgrade progress as shown below.



5. After the upgrade process is completed, restart (power cycle) the AIS device.



NOTE1: During the upgrade process, if the system fails, please restart the Firmware Upgrade program. If the problem persists, please contact AMEC for troubleshooting.

NOTE2: After the firmware upgrade is finished, the AIS device will return to the default setting.

Appendix A Verify Bootloader Version

Please power cycle the CAMINO-710 (power off, then power on). When the “Progress Bar” showing on screen, please push the function keys with the following sequence (DIM, FUNC, MENU, ESC, SRM, DISP; clockwise and starting from DIM) to check the Bootloader Version.

Please refer to the following diagram (as the latest Bootloader version: KERNEL:

20170716 DISPLAY:**20170716**) for the Bootloader information showing on CAMINO-701 screen.

